

THE DOUBLE BASS - Factsheet

The double bass is the lowest sounding member of the orchestral string family. It was developed during the sixteenth century from the violone or double bass viol. Because of its size it was a difficult instrument to play and through the years several attempts have been made to make it easier to play.

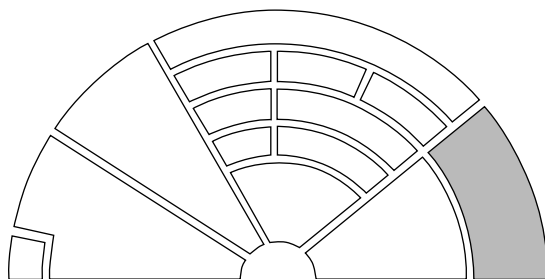
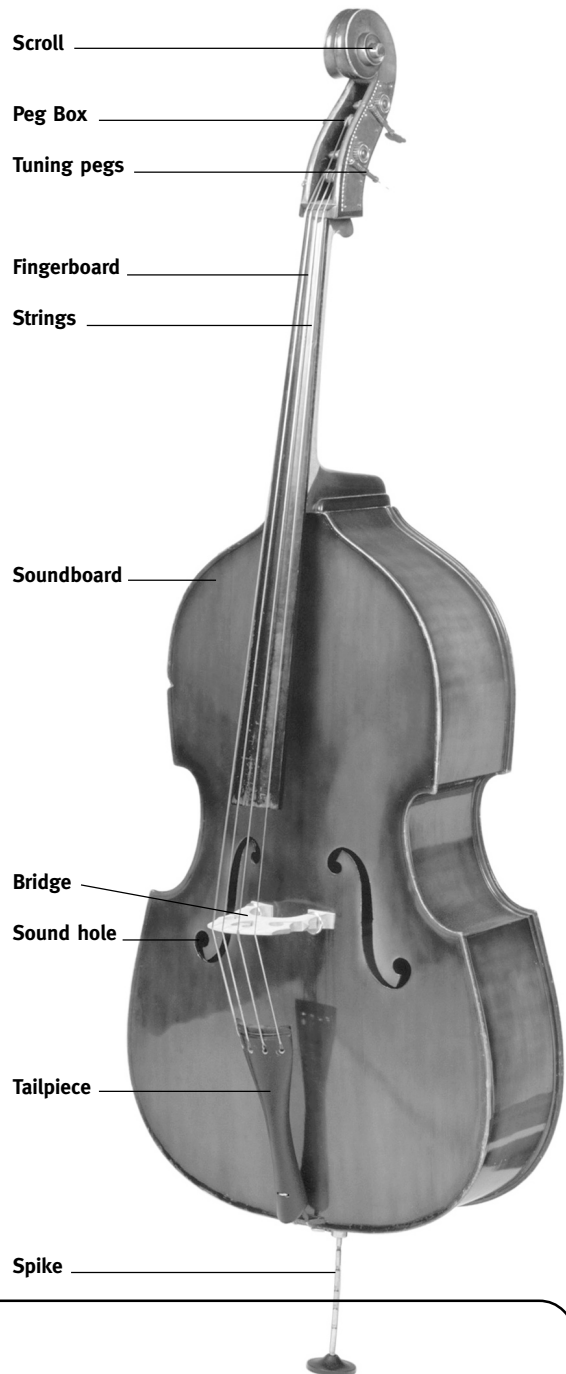
There are two types of bow used with the double bass; a French bow which is held overhand like a violin bow and the Simandl bow which was named after its inventor and is held with the palm of the hand facing up.

The double bass is often used in jazz and dance bands as well as in the orchestra. The average size of the double bass is 1.8m high (around 6ft), so performers have to either stand or sit on a stool to play. Most double basses have four strings although some instruments have five strings.

Double bass music is usually written using the bass clef although it does occasionally use both the tenor and treble clef. It always sounds an octave lower than written.

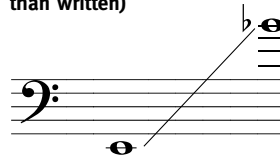
Famous works for double bass:

Trout quintet for piano & strings	Schubert
Septet Op.20	Beethoven
Also sprach Zarathustra	Strauss
The Elephant	Saint-Saens



Orchestral position

Double bass pitch range
(sounds one octave lower
than written)



Famous double bassists

Charlie Mingus
Dominico Dragonetti
Stuart Knussen
Duncan McTier
Serge Koussevitsky

Name: _____

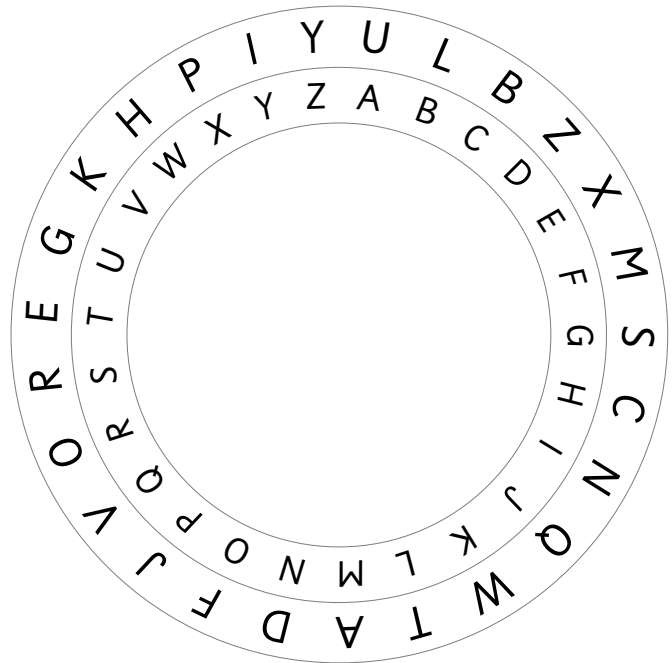
THE DOUBLE BASS - Worksheet

Use the outside of the codebreaker to help you find the name of a famous piece of music and its composer that is associated with the double bass.

BUODNKUT FM ECX UDNAUTR

ECX XTXJCUDE

BUANTTX RUNDE-RUXDR



Fill in the missing word to complete the sentences below.

1. The double bass is the _____ member of the string section in an orchestra.
2. The double bass is often used in _____ music.
3. Double bass players usually _____ to play although sometimes they sit on a stool.
4. The double bass usually has _____ strings although sometimes it can have 5.
5. The double bass was developed in the _____ century.
6. The double bass developed from the older instrument the _____.
7. The double bass can be played using either a _____ bow or a _____ bow.
8. The double bass usually sounds one _____ lower than written.
9. The double bass usually uses the _____ clef although it can sometimes use the tenor clef and even occasionally the treble clef.
10. The double bass is the _____ sounding member of the string section.

Octave
Lowest
4

Largest
Jazz
Violone

Bass
French
Stand

Simandl
Sixteenth

Name: _____

THE CLARINET - Factsheet

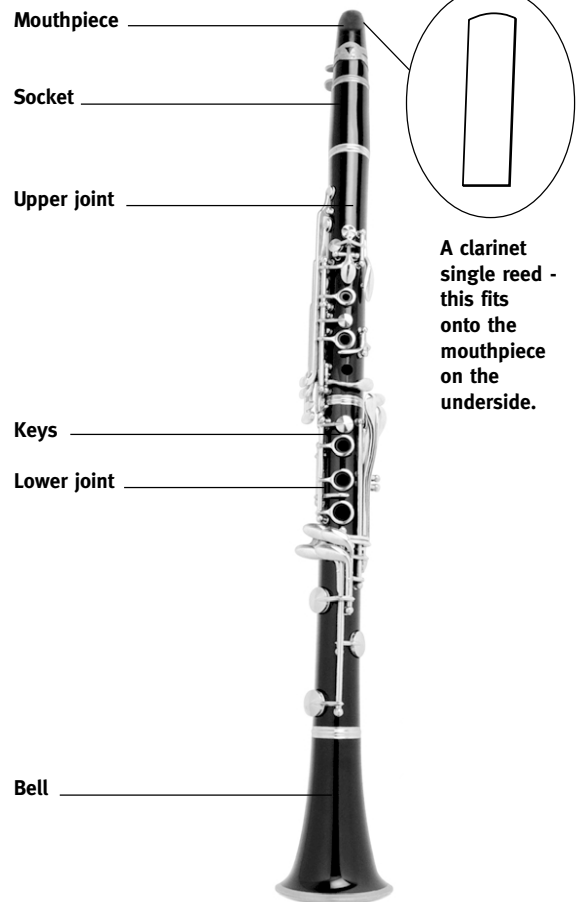
The clarinet developed from the older instrument called the chalumeau in the early 1700's by a German instrument maker called J.C.Denner. The clarinet had a separate mouthpiece and extra keys which meant that it could play a wider range of notes. In the 1840's the Boehm system of keys which had been developed for the flute were also added to the clarinet.

The clarinet is a single reed instrument with a piece of cane or plastic shaped to fit to the main part of the mouthpiece. The clarinet generally found in the orchestra is a B flat or A clarinet.

Clarinets are what are called transposing instruments. In music for a B flat clarinet a written note C actually plays a B flat on the instrument - one whole tone lower. In a clarinet in A if you see the note C the clarinet will sound an A which is two tones or a minor third lower.

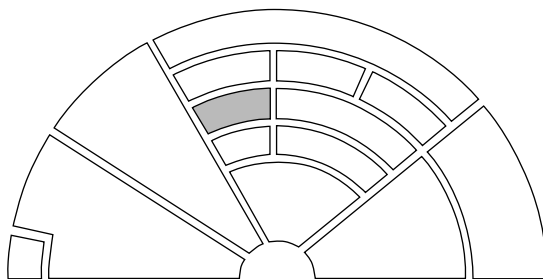
The clarinet is often used in jazz bands and one of the most famous performers on the clarinet was Acker Bilk. The clarinet has seen a rise in popularity in recent years and has become much easier for young people to learn with the development of the C clarinet. This instrument is made of a lightweight plastic and enables players to start at an earlier age, as it is smaller and lighter.

The basset horn in F is a lower sounding clarinet that is rarely found today but it was popular during the Classical period. There are also clarinets in E flat and a bass clarinet in B flat.



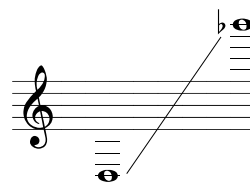
Famous works for clarinet:

Rhapsody in Blue	Gershwin
Concerto in A Major	Mozart
Peter & the Wolf (Cat)	Prokoviev
Quintet for clarinet & strings	Brahms
The Miraculous Mandarin	Bartok



Orchestral position

B flat Clarinet pitch range



Famous clarinetists

Acker Bilk
Jack Brymer
Gervase de Payer
Emma Johnson

THE CLARINET - Worksheet

Label the diagram of the clarinet and then find these words associated with the clarinet in the wordsearch below.

Reed

Denner

Contrabass

Acker Bilk

Basset Horn

Chalumeau

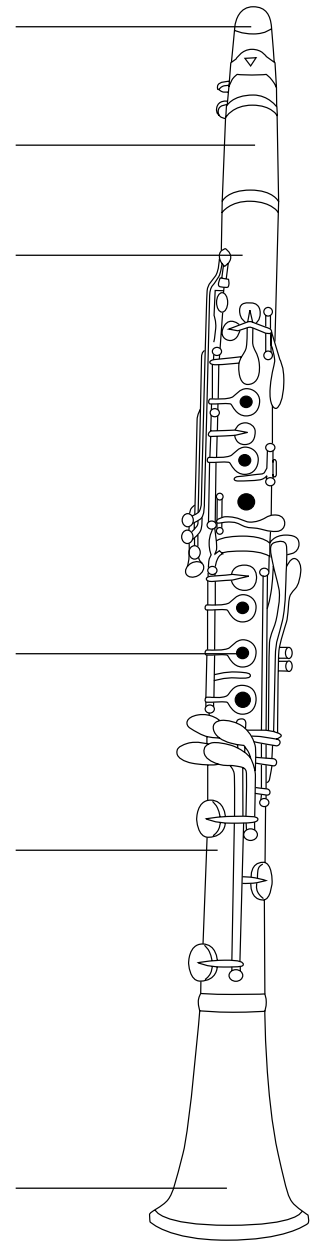
Boehm

Transposing

Jazz

Woodwind

T	B	S	U	T	K	X	D	F	B	C
A	R	E	E	D	C	M	E	Y	A	O
C	T	A	S	U	E	V	N	A	S	N
H	R	R	N	A	W	L	N	C	S	T
A	O	D	Q	S	Z	V	E	K	E	R
L	P	Q	V	E	P	B	R	E	T	A
U	F	J	P	N	Z	O	G	R	H	B
M	P	A	O	G	M	E	S	B	O	A
E	H	Z	B	I	A	H	L	I	R	S
A	K	Z	N	H	J	M	K	L	N	S
U	D	G	E	C	M	S	F	K	J	G
W	O	O	D	W	I	N	D	L	I	K



Answer true or false to the following statements about the clarinet.

1. The clarinet developed from the earlier instrument the chalumeau? _____
2. The basset horn was most often found in the orchestra during the Romantic period? _____
3. The B flat clarinet is becoming a popular instrument for young musicians to start learning on? _____
4. The clarinet is a single reed instrument? _____
5. The B flat and A clarinet are transposing instruments? _____